



**REFERENCES FilterMax**  
*Polyamide housings*





PRODUCT

**FILTERMAX 20**

FLOW RATE

**54 m<sup>3</sup> /h (2 x 27 m<sup>3</sup> /h)**

WATER

**BRACKISH WATER**

APPLICATION

**RO PRETREATMENT**

WATER USE

**INDUSTRIAL WATER**

OEM

**Confidential (Italy)**

END USER

**Confidential (Egypt)**

SECTOR

**INDUSTRIAL**



PRODUCT

**FILTERMAX 20**

FLOW RATE

**54 m<sup>3</sup> /h (2 x 27 m<sup>3</sup> /h)**

WATER

**SEA WATER**

APPLICATION

**RO PRETREATMENT**

WATER USE

**PROCESS WATER**

OEM

**Confidential (Italy)**

END USER

**Confidential (Portugal)**

SECTOR

**AGRICULTURE**



PRODUCT

**FILTERMAX 20**

FLOW RATE

**54 m<sup>3</sup> /h (2 x 27 m<sup>3</sup> /h)**

WATER

**BRACKISH WATER**

APPLICATION

**RO PRETREATMENT**

WATER USE

**INDUSTRIAL WATER**

OEM

**Confidential (Italy)**

END USER

**Confidential (Italy)**

SECTOR

**COSMETICS**





PRODUCT

**FILTERMAX 20**

FLOW RATE

**54 m<sup>3</sup> /h (2 x 27 m<sup>3</sup> /h)**

WATER

**BRACKISH WATER**

APPLICATION

**PROCESS WATER**

WATER USE

**INDUSTRIAL WATER**

OEM

**Confidential (Italy)**

END USER

**Confidential (Russia)**

SECTOR

**AGRICULTURE**



PRODUCT

**FILTERMAX 20**

FLOW RATE

**27 m<sup>3</sup> /h**

WATER

**SEA WATER**

APPLICATION

**PROCESS WATER**

WATER USE

**INDUSTRIAL WATER**

OEM

**Confidential (Egypt)**

END USER

**Confidential (Egypt)**

SECTOR

**POWER STATION**



PRODUCT

**FILTERMAX 20**

FLOW RATE

**81 m<sup>3</sup>/h (3 x 27 m<sup>3</sup> /h)**

WATER

**BRACKISH WATER**

APPLICATION

**RO PRETREATMENT**

WATER USE

**INDUSTRIAL WATER**

OEM

**Confidential (Hungary)**

END USER

**Confidential (Romania)**

SECTOR

**INDUSTRIAL**



PRODUCT

**FILTERMAX 20**

FLOW RATE

**54 m<sup>3</sup>/h (2 x 27 m<sup>3</sup> /h)**

WATER

**SEA WATER**

APPLICATION

**RO PRETREATMENT**

WATER USE

**INDUSTRIAL WATER**

OEM

**Confidential (Italy)**

END USER

**Confidential (Italy)**

SECTOR

**AGRICULTURE**





PRODUCT

**FILTERMAX 20**

FLOW RATE

**27 m<sup>3</sup> /h**

WATER

**RO PRETREATMENT**

APPLICATION

**BRACKISH WATER**

WATER USE

**INDUSTRIAL WATER**

OEM

**Confidential (Portugal)**

END USER

**Confidential (Portugal)**

SECTOR

**INDUSTRIAL**



PRODUCT

**FILTERMAX 20**

FLOW RATE

**54 m<sup>3</sup>/h (2 x 27 m<sup>3</sup> /h)**

WATER

**BRACKISH WATER**

APPLICATION

**RO PRETREATMENT**

WATER USE

**PROCESS WATER**

OEM

**Confidential (Italy)**

END USER

**Confidential (Serbia)**

SECTOR

**INDUSTRIAL**



PRODUCT

**FILTERMAX 20**

FLOW RATE

**20 m<sup>3</sup> /h**

WATER

**PROCESS WATER**

APPLICATION

**INDUSTRIAL**

WATER USE

**BRACKISH WATER**

OEM

**Confidential (Italy)**

END USER

**Confidential (Italy)**

SECTOR

**INDUSTRIAL**



PRODUCT

**FILTERMAX 20**

FLOW RATE

**27 m<sup>3</sup> /h**

WATER

**BRACKISH WATER**

APPLICATION

**RO PRETREATMENT**

WATER USE

**INDUSTRIAL WATER**

OEM

**Confidential (Italy)**

END USER

**Confidential (Italy)**

SECTOR

**INDUSTRIAL**





PRODUCT

**FILTERMAX 20**

FLOW RATE

**18 m<sup>3</sup> /h**

WATER

**SEA WATER**

APPLICATION

**RO PRETREATMENT**

WATER USE

**INDUSTRIAL WATER**

OEM

**Confidential (Italy)**

END USER

**Confidential (Italy)**

SECTOR

**CHEMICALS**



PRODUCT

**FILTERMAX 20**

FLOW RATE

**54 m<sup>3</sup> /h (2 x 27 m<sup>3</sup> /h)**

WATER

**BRACKISH WATER**

APPLICATION

**RO PRETREATMENT**

WATER USE

**INDUSTRIAL WATER**

OEM

**Confidential (Italy)**

END USER

**Confidential (Italy)**

SECTOR

**INDUSTRIAL**



PRODUCT

**FILTERMAX 20**

FLOW RATE

**54 m<sup>3</sup> /h (2 x 27 m<sup>3</sup> /h)**

WATER

**BRACKISH WATER**

APPLICATION

**RO PRETREATMENT**

WATER USE

**INDUSTRIAL WATER**

OEM

**Confidential (Italy)**

END USER

**Confidential (France)**

SECTOR

**TEXTILE**



PRODUCT

**FILTERMAX 20**

FLOW RATE

**54 m<sup>3</sup> /h (2 x 27 m<sup>3</sup> /h)**

WATER

**BRACKISH WATER**

APPLICATION

**RO PRETREATMENT**

WATER USE

**INDUSTRIAL WATER**

OEM

**Confidential (Italy)**

END USER

**Confidential (Poland)**

SECTOR

**REFINERY**





PRODUCT

**FILTERMAX 20**

FLOW RATE

**54 m<sup>3</sup> /h (2 x 27 m<sup>3</sup> /h)**

WATER

**BRACKISH WATER**

APPLICATION

**UF PRETREATMENT**

WATER USE

**INDUSTRIAL WATER**

OEM

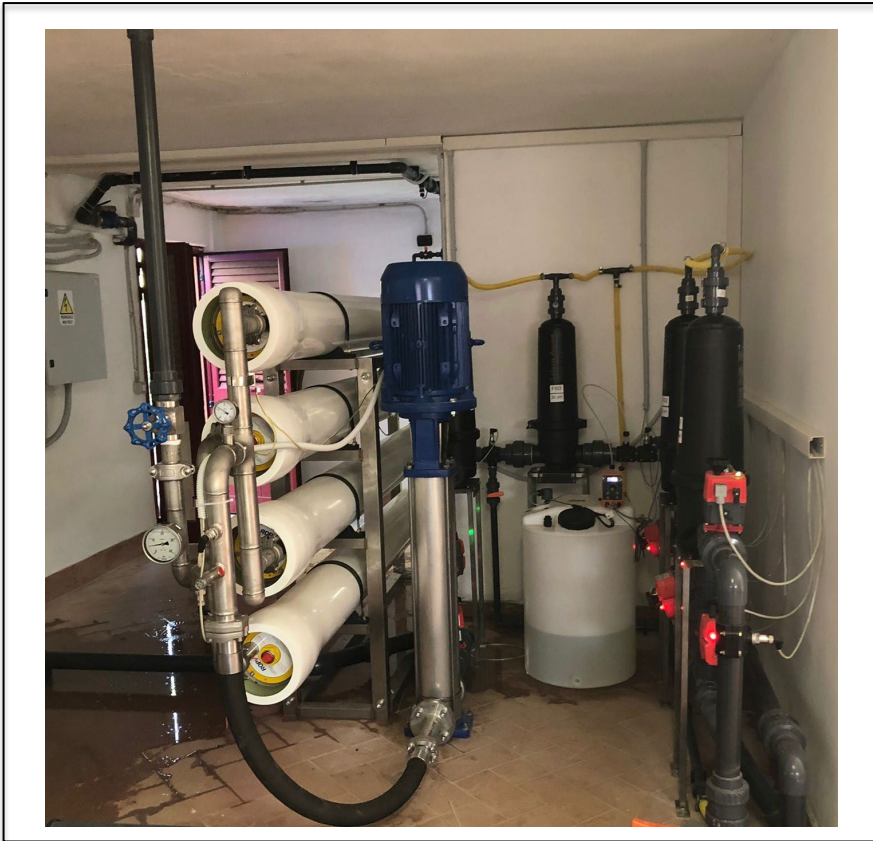
**Confidential (Italy)**

END USER

**Confidential (Italy)**

SECTOR

**MUNICIPAL**



PRODUCT

**FILTERMAX 20**

FLOW RATE

**15 m<sup>3</sup> /h**

WATER

**BRACKISH WATER**

APPLICATION

**RO PRETREATMENT**

WATER USE

**INDUSTRIAL WATER**

OEM

**Confidential (Italy)**

END USER

**Confidential (Italy)**

SECTOR

**AGRICULTURE**



PRODUCT

**FILTERMAX 20**

FLOW RATE

**54 m<sup>3</sup> /h (2 x 27 m<sup>3</sup> /h)**

WATER

**SEA WATER**

APPLICATION

**UF PRETREATMENT**

WATER USE

**DRINKING WATER**

OEM

**Confidential (Italy)**

END USER

**Confidential (Italy)**

SECTOR

**MUNICIPAL**



PRODUCT

**FILTERMAX 20**

FLOW RATE

**27 m<sup>3</sup> /h**

WATER

**BRACKISH WATER**

APPLICATION

**PROCESS WATER**

WATER USE

**INDUSTRIAL WATER**

OEM

**Confidential (Italy)**

END USER

**Confidential (Italy)**

SECTOR

**INDUSTRIAL**





PRODUCT

**FILTERMAX 13**

FLOW RATE

**18 m<sup>3</sup> /h**

WATER

**BRACKISH WATER**

APPLICATION

**RO PRETREATMENT**

WATER USE

**INDUSTRIAL WATER**

OEM

**Confidential (Italy)**

END USER

**Confidential (Italy)**

SECTOR

**AGRICULTURE**



**GRAZIE PER L'ATTENZIONE**

