



**REFERENCES FilterBlue - FilterBlanc**  
*Fiberglass housings*





PRODUCT

**FILTERBLUE-BL-03**

FLOW RATE

**162 m<sup>3</sup>/h (3 x 54 m<sup>3</sup>/h)**

WATER

**SEA WATER**

APPLICATION

**RO PRETREATMENT**

WATER USE

**INDUSTRIAL WATER**

OEM

**Confidential (Italy)**

END USER

**Confidential (Italy)**

SECTOR

**INDUSTRIAL**



PRODUCT

**FILTERBLUE-BL-03**

FLOW RATE

**216 m<sup>3</sup>/h (4 x 54 m<sup>3</sup>/h)**

WATER

**BRACKISH WATER**

APPLICATION

**RO PRETREATMENT**

WATER USE

**DRINKING WATER**

OEM

**Confidential (Spain)**

END USER

**Confidential (Spain)**

SECTOR

**BEVERAGE**



PRODUCT

**FILTERBLUE-BL-03**

FLOW RATE

**432 m<sup>3</sup>/h (8 x 54 m<sup>3</sup>/h)**

WATER

**BRACKISH WATER**

APPLICATION

**RO PRETREATMENT**

WATER USE

**INDUSTRIAL WATER**

OEM

**Confidential (Italy)**

END USER

**Confidential (Italy)**

SECTOR

**REFINERY**



PRODUCT

**FILTERBLUE-BL-03**

FLOW RATE

**108 m<sup>3</sup>/h (2 x 54 m<sup>3</sup>/h)**

WATER

**SEA WATER**

APPLICATION

**DRINKING WATER**

WATER USE

**DRINKING WATER**

OEM

**Confidential (France)**

END USER

**Confidential (Capo Verde)**

SECTOR

**INDUSTRIAL**



PRODUCT

**FILTERBLUE-BL-03**

FLOW RATE

**162 m<sup>3</sup>/h (3 x 54 m<sup>3</sup>/h)**

WATER

**SEA WATER**

APPLICATION

**PROCESS WATER**

WATER USE

**INDUSTRIAL WATER**

OEM

**Confidential (Italy)**

END USER

**Confidential (Italy)**

SECTOR

**CHEMICALS**



PRODUCT

**FILTERBLUE-BL-03**

FLOW RATE

**162 m<sup>3</sup>/h (3 x 54 m<sup>3</sup>/h)**

WATER

**BRACKISH WATER**

APPLICATION

**PROCESS WATER**

WATER USE

**INDUSTRIAL WATER**

OEM

**Confidential (Switzerland)**

END USER

**Confidential (Switzerland)**

SECTOR

**POWER STATION**



PRODUCT

**FILTERBLUE-BL-03**

FLOW RATE

**54 m<sup>3</sup>/h**

WATER

**BRACKISH WATER**

APPLICATION

**RO PRETREATMENT**

WATER USE

**INDUSTRIAL WATER**

OEM

**Confidential (Switzerland)**

END USER

**Confidential (Switzerland)**

SECTOR

**POWER STATION**



PRODUCT

**FILTERBLUE-BL-03**

FLOW RATE

**108 m<sup>3</sup>/h (2 x 54 m<sup>3</sup>/h)**

WATER

**BRACKISH WATER**

APPLICATION

**RO PRETREATMENT**

WATER USE

**INDUSTRIAL WATER**

OEM

**Confidential (Hungary)**

END USER

**Confidential (Hungary)**

SECTOR

**INDUSTRIAL**



PRODUCT

**FILTERBLUE-BL-03**

FLOW RATE

**108 m<sup>3</sup>/h (2 x 54 m<sup>3</sup>/h)**

WATER

**BRACKISH WATER**

APPLICATION

**RO PRETREATMENT**

WATER USE

**INDUSTRIAL WATER**

OEM

**Confidential (Hungary)**

END USER

**Confidential (Hungary)**

SECTOR

**REFINERY**



PRODUCT

**FILTERBLUE-BL-03**

FLOW RATE

**108 m<sup>3</sup>/h (2 x 54 m<sup>3</sup>/h)**

WATER

**BRACKISH WATER**

APPLICATION

**CIP RO PLANT**

WATER USE

**INDUSTRIAL WATER**

OEM

**Confidential (Italy)**

END USER

**Confidential (Italy)**

SECTOR

**FOOD**



PRODUCT

**FILTERBLUE-BL-03**

FLOW RATE

**216 m<sup>3</sup>/h (4 x 54 m<sup>3</sup>/h)**

WATER

**RO PRETREATMENT**

APPLICATION

**BRACKISH WATER**

WATER USE

**INDUSTRIAL WATER**

OEM

**Confidential (Italy)**

END USER

**Confidential (Italy)**

SECTOR

**FOOD**



PRODUCT

**FILTERBLUE-BL-03**

FLOW RATE

**432 m<sup>3</sup> /h (8 x 54 m<sup>3</sup> /h)**

WATER

**BRACKISH**

APPLICATION

**RO PRETREATMENT**

WATER USE

**PROCESS WATER**

OEM

**Confidential (Hungary)**

END USER

**Confidential (Hungary)**

SECTOR

**INDUSTRIAL**



PRODUCT

**FILTERBLUE-BL-03**

WATER USE

**INDUSTRIAL**

FLOW RATE

**432 m<sup>3</sup> /h ( 8 x 54 m<sup>3</sup> /h )**

OEM

**Confidential (Italy)**

WATER

**SEA WATER**

END USER

**Confidential (Pakistan)**

APPLICATION

**RO PRETREATMENT**

SECTOR

**CHEMICALS**



PRODUCT

**FILTERBLUE-BL-03**

FLOW RATE

**216 m<sup>3</sup>/h ( 4 x 54 m<sup>3</sup>/h )**

WATER

**SEA**

APPLICATION

**RO PRETREATMENT**

WATER USE

**INDUSTRIAL**

OEM

**Confidential (Italy)**

END USER

**Confidential (Italy)**

SECTOR

**REFINERY**



PRODUCT

**FILTERBLUE-BL-03**

FLOW RATE

**432 m<sup>3</sup> /h ( 8 x 54 m<sup>3</sup> /h )**

WATER

**SEA**

APPLICATION

**RO PRETREATMENT**

WATER USE

**INDUSTRIAL**

OEM

**Confidential (Italy)**

END USER

**Confidential (Italy)**

SECTOR

**REFINERY**



PRODUCT

**FILTERBLUE-BL-03**

FLOW RATE

**115 m<sup>3</sup>/h**

WATER

**BRACKISH**

APPLICATION

**RO PRETREATMENT**

WATER USE

**PROCESS WATER**

OEM

**Confidential (Netherlands)**

END USER

**Confidential (Netherlands)**

SECTOR

**AGRICULTURE**



PRODUCT

**FILTERBLUE-BL-03**

FLOW RATE

**324 m<sup>3</sup> /h ( 6 x 54 m<sup>3</sup> /h )**

WATER

**SEA**

APPLICATION

**RO PRETREATMENT**

WATER USE

**INDUSTRIAL**

OEM

**Confidential (Italy)**

END USER

**Confidential (Mexico)**

SECTOR

**INDUSTRIAL**



PRODUCT

**FILTERBLUE-BL-03**

FLOW RATE

**324 m<sup>3</sup> /h ( 6 x 54 m<sup>3</sup> /h )**

WATER

**SEA**

APPLICATION

**RO PRETREATMENT**

WATER USE

**INDUSTRIAL**

OEM

**Confidential (Italy)**

END USER

**Confidential (Italy)**

SECTOR

**CONFIDENTIAL**



PRODUCT	FILTERBLUE-BL-03
FLOW RATE	144 m <sup>3</sup> /h ( 4 x 36 m <sup>3</sup> /h )
WATER	SEA
APPLICATION	RO PRETREATMENT
WATER USE	INDUSTRIAL
OEM	Confidential (Italy)
END USER	Confidential (Italy)
SECTOR	REFINERY



PRODUCT

**FILTERBLUE-BL-03**

FLOW RATE

**2160 m<sup>3</sup>/h ( 40 x 54 m<sup>3</sup>/h )**

WATER

**BRACKISH**

APPLICATION

**RO PRETREATMENT**

WATER USE

**INDUSTRIAL**

OEM

**Confidential (Italy)**

END USER

**Confidential (Qatar)**

SECTOR

**CONFIDENTIAL**



PRODUCT

**FILTERBLUE-BL-03**

FLOW RATE

**108 m<sup>3</sup>/h ( 2 x 54 m<sup>3</sup>/h )**

WATER

**SEA**

APPLICATION

**RO PRETREATMENT**

WATER USE

**INDUSTRIAL**

OEM

**Confidential (Italy)**

END USER

**Confidential (Egypt)**

SECTOR

**POWER STATION**



PRODUCT

**FILTERBLUE-BL-03**

WATER USE

**CLEANING SOLUTION**

FLOW RATE

**108 m<sup>3</sup>/h ( 2 x 54 m<sup>3</sup>/h )**

OEM

**Confidential (Italy)**

WATER

**BRACKISH**

END USER

**Confidential (Egypt)**

APPLICATION

**CIP RO PLANT**

SECTOR

**POWER STATION**



PRODUCT

**FILTERBLUE-BL-03**

FLOW RATE

**108 m<sup>3</sup>/h ( 2 x 54 m<sup>3</sup>/h )**

WATER

**BRACKISH**

APPLICATION

**RO PRETREATMENT**

WATER USE

**INDUSTRIAL**

OEM

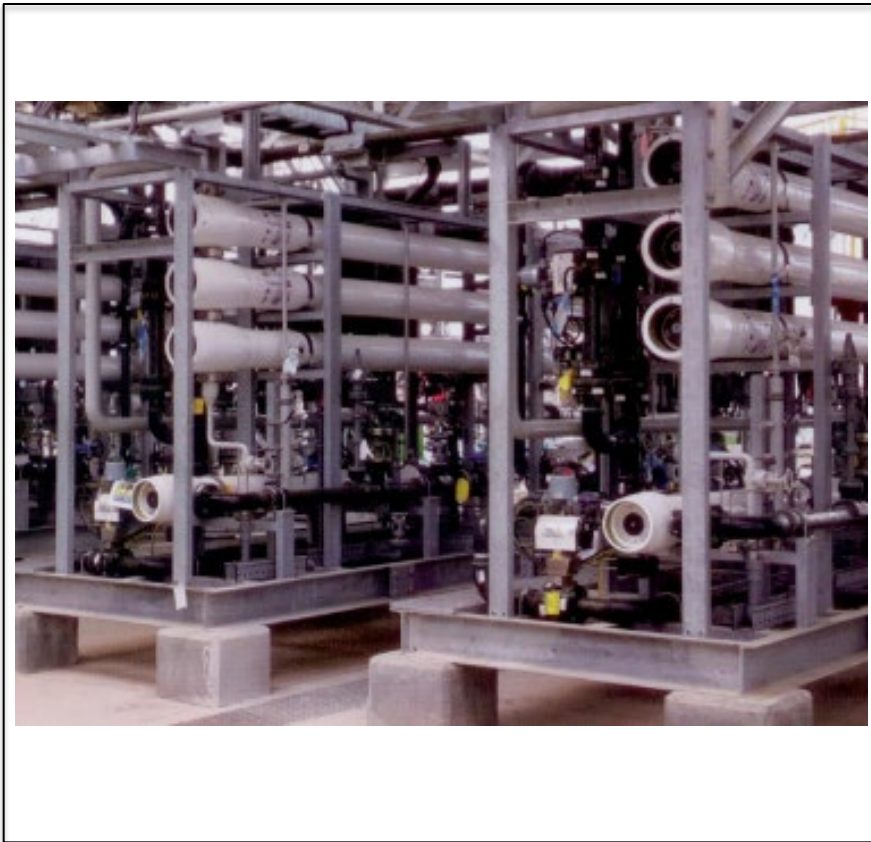
**Confidential (Germany)**

END USER

**Confidential (Egypt)**

SECTOR

**MUNICIPAL**



PRODUCT

**FILTERBLUE-BL-03**

FLOW RATE

**162 m<sup>3</sup>/h ( 3 x 54 m<sup>3</sup>/h )**

WATER

**SEA**

APPLICATION

**RO PRETREATMENT**

WATER USE

**INDUSTRIAL**

OEM

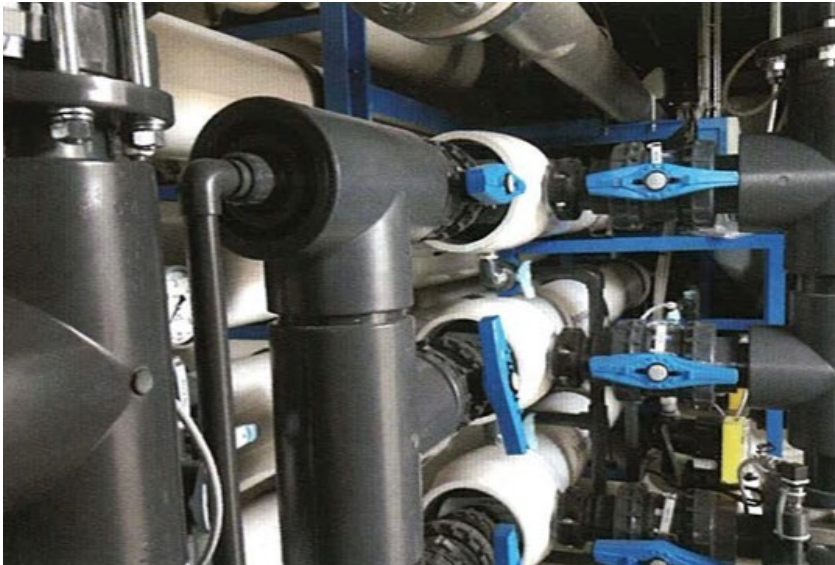
**Confidential (Germany)**

END USER

**Confidential (Papua New Guinea)**

SECTOR

**REFINERY**



PRODUCT

**FILTERBLUE-BL-03**

FLOW RATE

**162 m<sup>3</sup>/h ( 3 x 54 m<sup>3</sup>/h )**

WATER

**BRACKISH**

APPLICATION

**RO PRETREATMENT**

WATER USE

**INDUSTRIAL**

OEM

**Confidential (Italy)**

END USER

**Confidential (Italy)**

SECTOR

**INDUSTRIAL**



PRODUCT

**FILTERBLUE-BL-03**

FLOW RATE

**324 m<sup>3</sup>/h ( 6 x 54 m<sup>3</sup>/h )**

WATER

**BRACKISH**

APPLICATION

**RO PRETREATMENT**

WATER USE

**INDUSTRIAL**

OEM

**Confidential (Italy)**

END USER

**Confidential (Italy)**

SECTOR

**INDUSTRIAL**



PRODUCT

**FILTERBLUE-BL-03**

FLOW RATE

**162 m<sup>3</sup>/h ( 3 x 54 m<sup>3</sup>/h )**

WATER

**BRACKISH WATER**

APPLICATION

**RO PRETREATMENT**

WATER USE

**INDUSTRIAL**

OEM

**Confidential (Italy)**

END USER

**Confidential (Italy)**

SECTOR

**INDUSTRIAL**



PRODUCT

**FILTERBLUE-BL-03**

FLOW RATE

**270 m<sup>3</sup> /h ( 5 x 54 m<sup>3</sup> /h )**

WATER

**BRACKISH WATER**

APPLICATION

**RO PRETREATMENT**

WATER USE

**INDUSTRIAL**

OEM

**Confidential (South Africa)**

END USER

**Confidential (South Africa)**

SECTOR

**GOLD MINE**



PRODUCT

**FILTERBLUE-BL-03**

FLOW RATE

**216 m<sup>3</sup> /h ( 4 x 54 m<sup>3</sup> /h )**

WATER

**SEA WATER**

APPLICATION

**RO PRETREATMENT**

WATER USE

**DRINKING**

OEM

**Confidential (Italy)**

END USER

**Confidential (Egypt)**

SECTOR

**HOTEL & RESORTS**



PRODUCT

**FILTERBLUE-BL-02**

FLOW RATE

**72 m<sup>3</sup>/h (2 x 36 m<sup>3</sup>/h)**

WATER

**SEA WATER**

APPLICATION

**RO PRETREATMENT**

WATER USE

**INDUSTRIAL WATER**

OEM

**Confidential (The Netherlands)**

END USER

**Confidential (The Netherlands)**

SECTOR

**CRUISE SHIP**



PRODUCT

**FILTERBLUE-BL-02**

FLOW RATE

**432 m<sup>3</sup>/h (8 x 54 m<sup>3</sup>/h)**

WATER

**RO PRETREATMENT**

APPLICATION

**SEA WATER**

WATER USE

**DRINKING WATER**

OEM

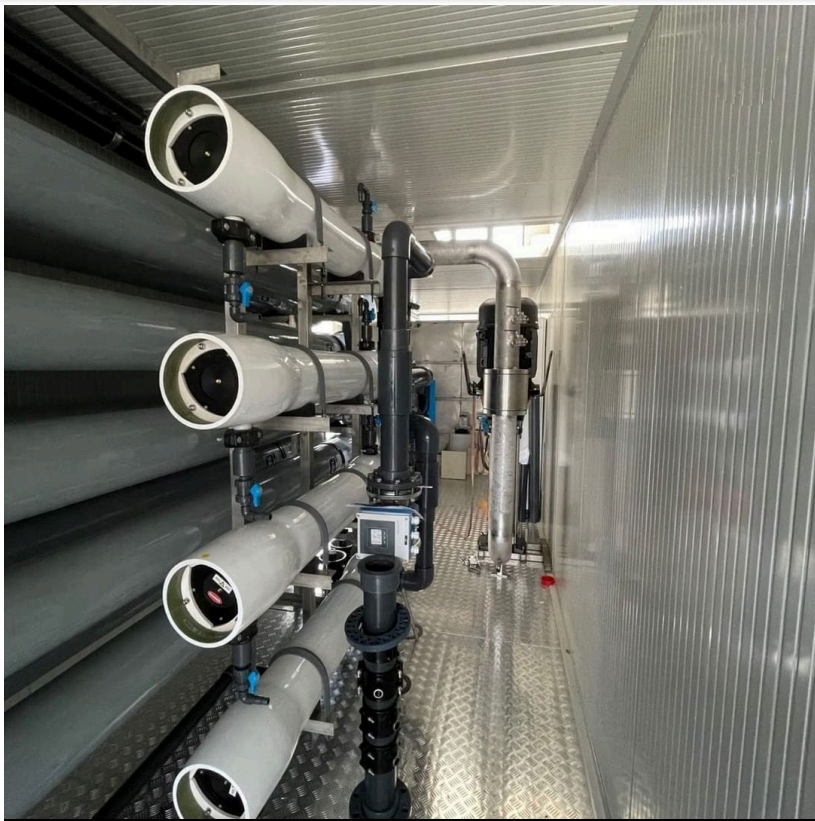
**Confidential (France)**

END USER

**Confidential (Congo)**

SECTOR

**MUNICIPAL**



PRODUCT

**FILTERBLUE-BL-02**

FLOW RATE

**144 m<sup>3</sup>/h (36 x 4 m<sup>3</sup>/h)**

WATER

**SEA WATER**

APPLICATION

**RO PRETREATMENT**

WATER USE

**DRINKING WATER**

OEM

**Confidential (Italy)**

END USER

**Confidential (Mauritania)**

SECTOR

**MUNICIPAL**



PRODUCT

**FILTERBLUE-BL-02**

FLOW RATE

**36 m<sup>3</sup> /h**

WATER

**BRACKISH**

APPLICATION

**RO PRETREATMENT**

WATER USE

**PROCESS WATER**

OEM

**Confidential (Italy)**

END USER

**Confidential (Italy)**

SECTOR

**INDUSTRIAL**



PRODUCT

**FILTERBLUE-BL-02**

FLOW RATE

**720 m<sup>3</sup> /h ( 6 x 120 m<sup>3</sup> /h )**

WATER

**SEA**

APPLICATION

**RO PRETREATMENT**

WATER USE

**DRINKING**

OEM

**Confidential (France)**

END USER

**Confidential (France)**

SECTOR

**CRUISE SHIP**



PRODUCT

**FILTERBLUE-BL-02**

FLOW RATE

**72 m<sup>3</sup> /h ( 2 x 36 m<sup>3</sup> /h )**

WATER

**SEA**

APPLICATION

**RO PRETREATMENT**

WATER USE

**DRINKING**

OEM

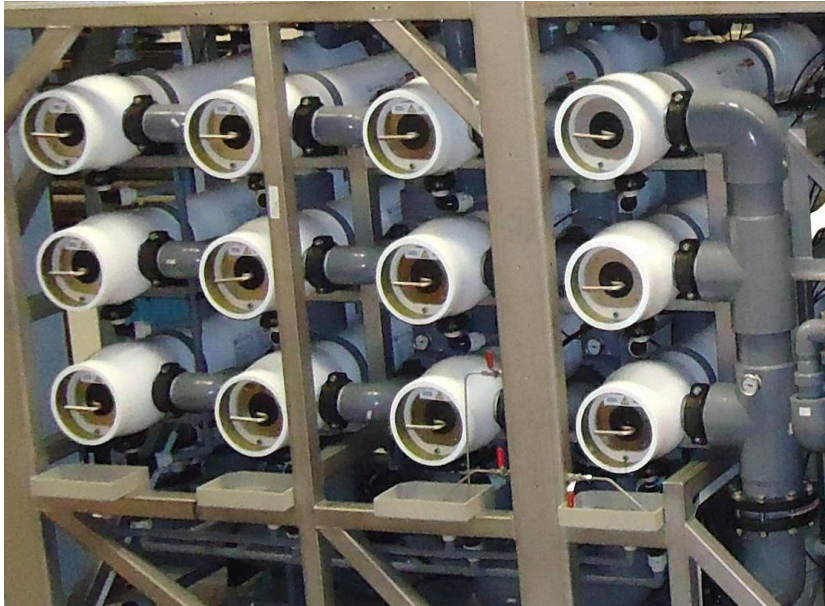
**Confidential (Italy)**

END USER

**Confidential (Cyprus)**

SECTOR

**MINICIPAL**



PRODUCT	FILTERBLUE-BL-02
FLOW RATE	216 m <sup>3</sup> /h ( 4 x 54 m <sup>3</sup> /h )
WATER	SEA
APPLICATION	RO PRETREATMENT
WATER USE	DRINKING
OEM	Confidential (France)
END USER	Confidential (France)
SECTOR	NAVY



PRODUCT

**FILTERBLUE-BL-02**

FLOW RATE

**216 m<sup>3</sup>/h ( 4 x 54 m<sup>3</sup>/h )**

WATER

**SEA**

APPLICATION

**RO PRETREATMENT**

WATER USE

**DRINKING**

OEM

**Confidential (Italy)**

END USER

**Confidential (Italy)**

SECTOR

**MUNICIPAL**



PRODUCT

**FILTERBLUE-BL-02**

FLOW RATE

**108 m<sup>3</sup>/h ( 2 x 54 m<sup>3</sup>/h )**

WATER

**BRACKISH**

APPLICATION

**RO PRETREATMENT**

WATER USE

**INDUSTRIAL**

OEM

**Confidential (Italy)**

END USER

**Confidential (Italy)**

SECTOR

**INDUSTRIAL**



PRODUCT

**FILTERBLUE-BL-02**

FLOW RATE

**162 m<sup>3</sup>/h ( 3 x 54 m<sup>3</sup>/h )**

WATER

**BRACKISH**

APPLICATION

**CIP RO PLANT**

WATER USE

**CLEANING SOLUTION**

OEM

**Confidential (Italy)**

END USER

**Confidential (Italy)**

SECTOR

**INDUSTRIAL**



PRODUCT

**FILTERBLUE-BL-02**

FLOW RATE

**54 m<sup>3</sup> /h**

WATER

**BRACKISH**

APPLICATION

**RO PRETREATMENT**

WATER USE

**DRINKING**

OEM

**Confidential (Italy)**

END USER

**Confidential (Italy)**

SECTOR

**MUNICIPAL**



PRODUCT

**FILTERBLUE-BL-02**

FLOW RATE

**144 m<sup>3</sup>/h ( 4 x 36 m<sup>3</sup>/h )**

WATER

**BRACKISH**

APPLICATION

**RO PRETREATMENT**

WATER USE

**INDUSTRIAL**

OEM

**Confidential (Italy)**

END USER

**Confidential (Italy)**

SECTOR

**INDUSTRIAL**



PRODUCT

**FILTERBLANC-BL-02**

FLOW RATE

**72 m<sup>3</sup>/h (2 x 36 m<sup>3</sup>/h)**

WATER

**BRACKISH WATER**

APPLICATION

**RO PRETREATMENT**

WATER USE

**INDUSTRIAL WATER**

OEM

**Confidential (Italy)**

END USER

**Confidential (Italy)**

SECTOR

**Industrial**



PRODUCT

**FILTERBLANC-BL-02**

FLOW RATE

**54 m<sup>3</sup> /h**

WATER

**BRACKISH WATER**

APPLICATION

**RO PRETREATMENT**

WATER USE

**INDUSTRIAL WATER**

OEM

**Confidential (United Kingdom)**

END USER

**Confidential (United Kingdom)**

SECTOR

**Industrial**



PRODUCT

**FILTERBLANC-BL-02**

FLOW RATE

**108 m<sup>3</sup> /h (3 x 36 m<sup>3</sup> /h)**

WATER

**SEA WATER**

APPLICATION

**RO PRETREATMENT**

WATER USE

**DRINKING WATER**

OEM

**Confidential (Italy)**

END USER

**Confidential (Norway)**

SECTOR

**NAVY**



PRODUCT

**FILTERBLANC-BL-02**

FLOW RATE

**36 m<sup>3</sup> /h**

WATER

**SEA WATER**

APPLICATION

**RO PRETREATMENT**

WATER USE

**PROCESS WATER**

OEM

**Confidential (Germany)**

END USER

**Confidential (Germany)**

SECTOR

**CRUISE SHIP**



PRODUCT

**FILTERBLANC-BL-02**

FLOW RATE

**36 m<sup>3</sup> /h**

WATER

**BRACKISH WATER**

APPLICATION

**RO PRETREATMENT**

WATER USE

**PROCESS WATER**

OEM

**Confidential (Italy)**

END USER

**Confidential (Malta)**

SECTOR

**INDUSTRIAL**



PRODUCT

**FILTERBLANC-BL-02**

FLOW RATE

**144 m<sup>3</sup> /h (4 x 36 m<sup>3</sup> /h)**

WATER

**BRACKISH WATER**

APPLICATION

**RO PRETREATMENT**

WATER USE

**INDUSTRIAL WATER**

OEM

**Confidential (Italy)**

END USER

**Confidential (UAE)**

SECTOR

**INDUSTRIAL**



PRODUCT

**FILTERBLANC-BL-02**

FLOW RATE

**72 m<sup>3</sup> /h (2 x 36 m<sup>3</sup> /h)**

WATER

**BRACKISH WATER**

APPLICATION

**RO PRETREATMENT**

WATER USE

**INDUSTRIAL WATER**

OEM

**Confidential (Italy)**

END USER

**Confidential (UAE)**

SECTOR

**BEVERAGE**



PRODUCT

**FILTERBLANC-BL-02**

FLOW RATE

**36 m<sup>3</sup> /h**

WATER

**BRACKISH WATER**

APPLICATION

**RO PRETREATMENT**

WATER USE

**INDUSTRIAL WATER**

OEM

**Confidential (Italy)**

END USER

**Confidential (UAE)**

SECTOR

**BEVERAGE**



PRODUCT

**FILTERBLANC-BL-02**

FLOW RATE

**36 m<sup>3</sup> /h**

WATER

**BRACKISH WATER**

APPLICATION

**RO PRETREATMENT**

WATER USE

**INDUSTRIAL WATER**

OEM

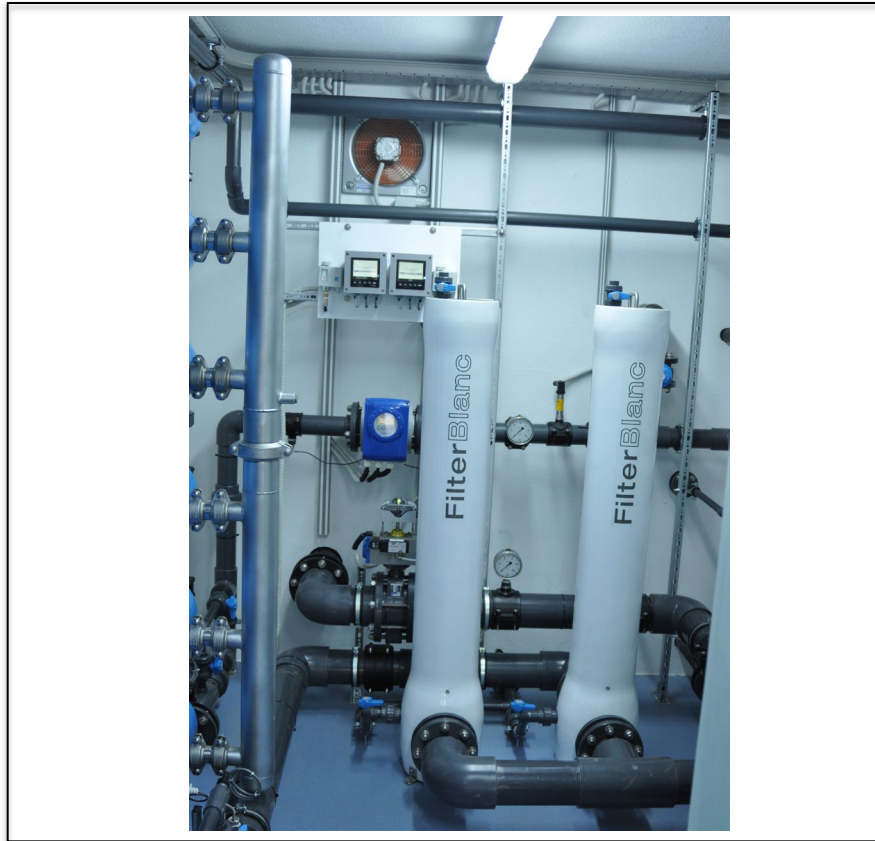
**Confidential (Italy)**

END USER

**Confidential (Italy)**

SECTOR

**INDUSTRIAL**



PRODUCT	FILTERBLANC-BL-02
FLOW RATE	72 m <sup>3</sup> /h ( 2 x 36 m <sup>3</sup> /h)
WATER	BRACKISH WATER
APPLICATION	RO PRETREATMENT
WATER USE	INDUSTRIAL WATER
OEM	Confidential (Greece)
END USER	Confidential (Greece)
SECTOR	REFINERY



PRODUCT

**FILTERBLANC-BL-01**

FLOW RATE

**18 m<sup>3</sup> /h**

WATER

**BRACKISH WATER**

APPLICATION

**RO PRETREATMENT**

WATER USE

**INDUSTRIAL**

OEM

**Confidential (Italy)**

END USER

**Confidential (England)**

SECTOR

**INDUSTRIAL**



PRODUCT	FILTERBLANC-BL-01
FLOW RATE	18 m <sup>3</sup> /h
WATER	BRACKISH WATER
APPLICATION	RO PRETREATMENT
WATER USE	PROCESS WATER
OEM	Confidential (Germany)
END USER	Confidential (Poland)
SECTOR	INDUSTRIAL



PRODUCT

**FILTERBLANC-BL-01**

WATER USE

**PROCESS WATER**

FLOW RATE

**36 m<sup>3</sup>/h ( 2 x 18 m<sup>3</sup>/h )**

OEM

**Confidential (Italy)**

WATER

**SEA WATER**

END USER

**Confidential (Poland)**

APPLICATION

**RO PRETREATMENT**

SECTOR

**TEXTILE**



PRODUCT

**FILTERBLANC-BL-01**

FLOW RATE

**36 m<sup>3</sup> /h (2 x 18 m<sup>3</sup> /h)**

WATER

**BRACKISH WATER**

APPLICATION

**RO PRETREATMENT**

WATER USE

**INDUSTRIAL WATER**

OEM

**Confidential (Italy)**

END USER

**Confidential (Italy)**

SECTOR

**INDUSTRIAL**



PRODUCT

**FILTERBLANC-BL-01**

FLOW RATE

**18 m<sup>3</sup> /h**

WATER

**BRACKISH WATER**

APPLICATION

**SOFTENER PRETREATMENT**

WATER USE

**INDUSTRIAL WATER**

OEM

**Confidential (Italy)**

END USER

**Confidential (Italy)**

SECTOR

**INDUSTRIAL**



**GRAZIE PER L'ATTENZIONE**

