



**REFERENCES FBK200A – F2000**  
***SS 316 L Self Cleaning Filters***





PRODUCT	FILBLACK FBK2000A
FLOW RATE	54 m <sup>3</sup> /h
WATER	BRACKISH WATER
APPLICATION	INDUSTRIAL
WATER USE	INDUSTRIAL WATER
OEM	Confidential (Italy)
END USER	Confidential (Italy)
SECTOR	POWER STATION



PRODUCT

FILBLACK FBK2000A

FLOW RATE

144 m<sup>3</sup>/h

WATER

BRACKISH WATER

APPLICATION

PROCESS WATER

WATER USE

INDUSTRIAL WATER

OEM

Confidential (Italy)

END USER

Confidential (Italy)

SECTOR

INDUSTRIAL



PRODUCT

**FILBLACK FBK2000A**

FLOW RATE

**54 m<sup>3</sup>/h**

WATER

**BRACKISH WATER**

APPLICATION

**INDUSTRIAL**

WATER USE

**INDUSTRIAL WATER**

OEM

**Confidential (Italy)**

END USER

**Confidential (Italy)**

SECTOR

**MUNICIPAL**



PRODUCT

**FILBLACK FBK2000A**

FLOW RATE

**540 m<sup>3</sup>/h ( 2 x 270 m<sup>3</sup>/h )**

WATER

**BRACKISH WATER**

APPLICATION

**UF PRETREATMENT**

WATER USE

**INDUSTRIAL WATER**

OEM

**Confidential (Hungary)**

END USER

**Confidential (Hungary)**

SECTOR

**INDUSTRIAL**



PRODUCT

**FILBLACK FBK2000A**

FLOW RATE

**198 m<sup>3</sup>/h**

WATER

**PROCESS WATER**

APPLICATION

**UF PRETREATMENT**

WATER USE

**DRINKING WATER**

OEM

**Confidential (Italy)**

END USER

**Confidential (Brazil)**

SECTOR

**INDUSTRIAL**



PRODUCT

FILBLACK FBK2000A

FLOW RATE

27 m<sup>3</sup>/h

WATER

PROCESS WATER

APPLICATION

INDUSTRIAL

WATER USE

BRACKISH WATER

OEM

Confidential (Italy)

END USER

Confidential (Italy)

SECTOR

INDUSTRIAL



PRODUCT	FILBLACK FBK2000A
FLOW RATE	27 m <sup>3</sup> /h
WATER	BRACKISH WATER
APPLICATION	UF PRETREATMENT
WATER USE	PROCESS WATER
OEM	Confidential (Italy)
END USER	Confidential (Italy)
SECTOR	COSMETIC





PRODUCT	FILBLUE F2000
FLOW RATE	120 m <sup>3</sup> /h
WATER	BRACKISH WATER
APPLICATION	FINAL FILTRATION
WATER USE	INDUSTRIAL WATER
OEM	Confidential (Italy)
END USER	Confidential (Italy)
SECTOR	INDUSTRIAL



PRODUCT

**FILBLUE F2000**

FLOW RATE

**150 m<sup>3</sup> /h**

WATER

**BRACKISH WATER**

APPLICATION

**WASTE WATER TREATMENT**

WATER USE

**INDUSTRIAL WATER**

OEM

**Confidential (Italy)**

END USER

**Confidential (Egypt)**

SECTOR

**MUNICIPAL**



PRODUCT

FILBLUE F2000

FLOW RATE

120 m<sup>3</sup> /h

WATER

BRACKISH WATER

APPLICATION

WASTE WATER TREATMENT

WATER USE

INDUSTRIAL WATER

OEM

Confidential (Russia)

END USER

Confidential (Russia)

SECTOR

PAPER MILL



PRODUCT

**FILBLUE F2000**

FLOW RATE

**400 m<sup>3</sup> /h**

WATER

**BRACKISH WATER**

APPLICATION

**FINAL FILTRATION**

WATER USE

**COOLING TOWERS**

OEM

**Confidential (Italy)**

END USER

**Confidential (Mexico)**

SECTOR

**INDUSTRIAL**



PRODUCT	FILBLUE F2000
FLOW RATE	18 m <sup>3</sup> /h
WATER	BRACKISH WATER
APPLICATION	FINAL FILTRATION
WATER USE	INDUSTRIAL
OEM	Confidential (South Africa)
END USER	Confidential (Great Britain)
SECTOR	INDUSTRIAL



PRODUCT

FILBLUE F2000

FLOW RATE

400 m<sup>3</sup> /h ( 2 x 200 m<sup>3</sup> /h )

WATER

SEA

APPLICATION

UF PRETREATMENT

WATER USE

INDUSTRIAL

OEM

Confidential (Italy)

END USER

Confidential (Egypt)

SECTOR

POWER STATION



PRODUCT

FILBLUE F2000

FLOW RATE

300 m<sup>3</sup>/h ( 2 x 150 m<sup>3</sup>/h )

WATER

WELL WATER

APPLICATION

FINAL FILTRATION

WATER USE

HEATING SYSTEM

OEM

Confidential (Italy)

END USER

Confidential (Italy)

SECTOR

INDUSTRIAL



PRODUCT

**FILBLUE F2000**

FLOW RATE

**60 m<sup>3</sup> /h**

WATER

**BRACKISH**

APPLICATION

**UF PRETREATMENT**

WATER USE

**INDUSTRIAL**

OEM

**Confidential (Italy)**

END USER

**Confidential (Tunisia)**

SECTOR

**POWER STATION**





PRODUCT

FILBLUE F2000

FLOW RATE

180 m<sup>3</sup> /h

WATER

BRACKISH

APPLICATION

WASTE WATER TREATMENT

WATER USE

INDUSTRIAL

OEM

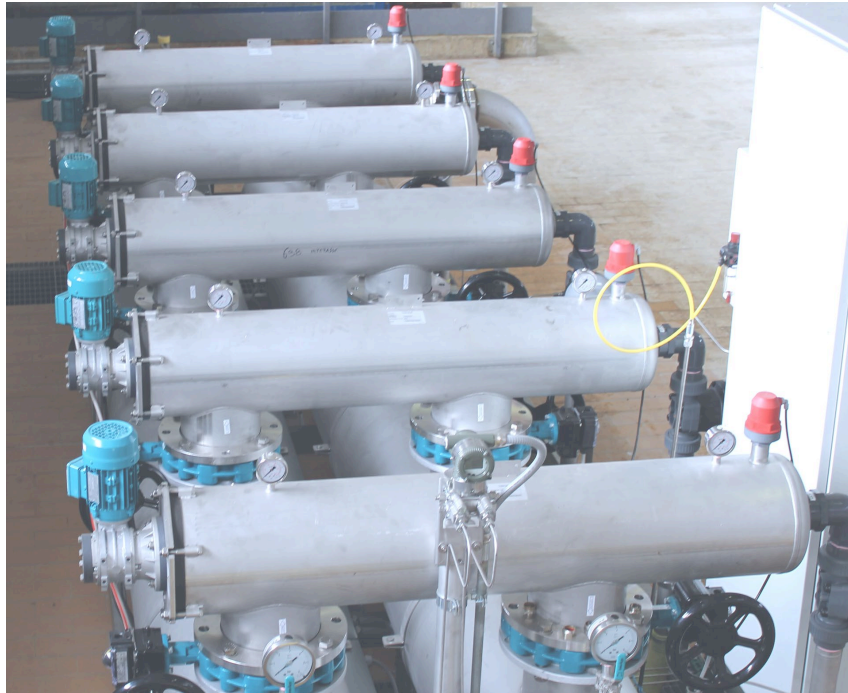
Confidential (Italy)

END USER

Confidential (Italy)

SECTOR

FOOD



PRODUCT

**FILBLUE F2000**

FLOW RATE

**1000 m<sup>3</sup>/h ( 5 x 150 m<sup>3</sup>/h )**

WATER

**BRACKISH**

APPLICATION

**PREFILTRATION**

WATER USE

**INDUSTRIAL**

OEM

**Confidential (Italy)**

END USER

**Confidential (Italy)**

SECTOR

**POWER STATION**



PRODUCT	FILBLUE F2000
FLOW RATE	1000 m <sup>3</sup> /h ( 2 x 500 m <sup>3</sup> /h )
WATER	BRACKISH
APPLICATION	UF PRETREATMENT
WATER USE	INDUSTRIAL
OEM	Confidential (Italy)
END USER	Confidential (Italy)
SECTOR	REFINERY



PRODUCT

**FILBLUE F2000**

FLOW RATE

**750 m<sup>3</sup>/h ( 5 x 150 m<sup>3</sup>/h )**

WATER

**BRACKISH**

APPLICATION

**PREFILTRATION**

WATER USE

**INDUSTRIAL**

OEM

**Confidential (Italy)**

END USER

**Confidential (Italy)**

SECTOR

**POWER STATION**



PRODUCT	FILBLUE F2000
FLOW RATE	300 m <sup>3</sup> /h ( 2 x 150 m <sup>3</sup> /h )
WATER	WELL WATER
APPLICATION	FINAL FILTRATION
WATER USE	DRINKING
OEM	Confidential (Italy)
END USER	Confidential (Italy)
SECTOR	MUNICIPAL



PRODUCT

FILBLUE F2000

FLOW RATE

360 m<sup>3</sup> /h ( 4 x 90 m<sup>3</sup> /h )

WATER

SEA

APPLICATION

WASTE WATER TREATMENT

WATER USE

WATER REUSE

OEM

Confidential (Italy)

END USER

Confidential (Italy)

SECTOR

CRUISE SHIPS



PRODUCT

**FILBLUE F2000**

FLOW RATE

**120 m<sup>3</sup>/h ( 2 x 60 m<sup>3</sup>/h )**

WATER

**BRACKISH**

APPLICATION

**UF PRETREATMENT**

WATER USE

**INDUSTRIAL**

OEM

**Confidential (Italy)**

END USER

**Confidential (Mexico)**

SECTOR

**INDUSTRIAL**



**GRAZIE PER L'ATTENZIONE**

